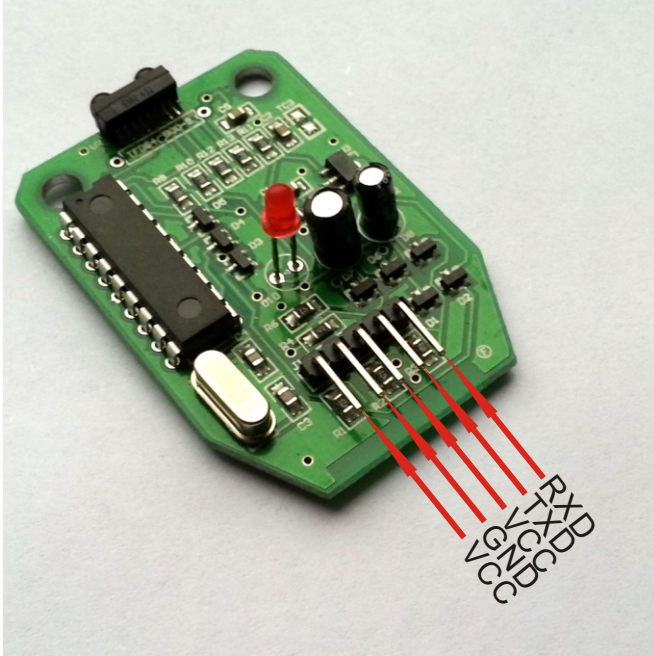


RS-232 DTE Infrared Adapter



Default Fixed IR baud rate: 9600 bps

Fixed IR baud rate options:
4800/19200/38400/57600/115200 bps

RXD: Connect to RS232 DTE TX
TXD: Connect to RS232 DTE RX
VCC: 3.5~15V external DC-IN
GND: Ground

PCB and PIN assignment



Cable for connecting to user's device